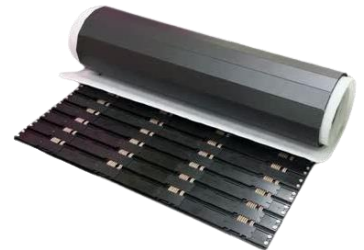


Sidewinder

pitch	1.2	1.5	1.9	2.6	3.9
pixel tech	GOB	GOB	GOB	GOB	GOB



ideal for

Floor, mobile hanging,
rolling display

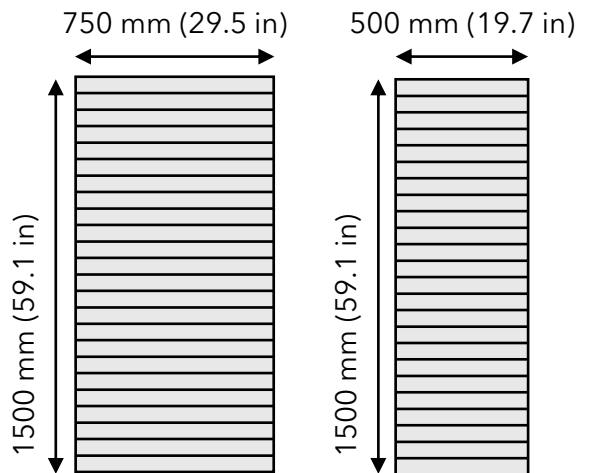
summary

Sidewinder is the innovative application to bring LED where it has never gone before.

Featuring rollable panels which are only 13mm thick total, **Sidewinder** panels are comprised of slats. Each slat is only 62.5mm tall, and slats are hinged at the face. Panels are combined to produce displays of every size and need.

Sidewinder panels all come standard with a GOB protective epoxy coating, making Sidewinder the high-durability display you can trust.

dimensions



weight

15 kg/square meter 3 lbs/square foot

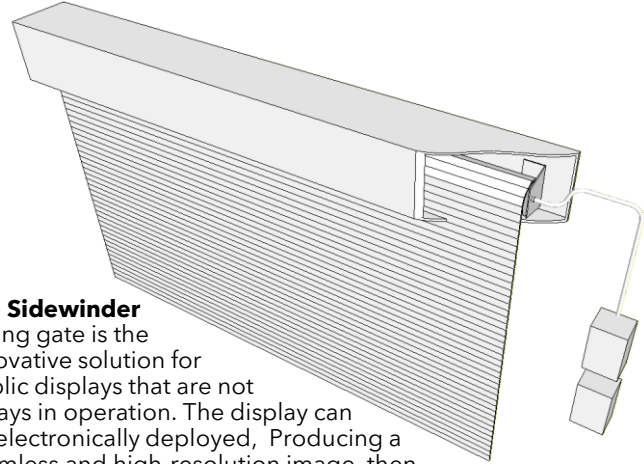
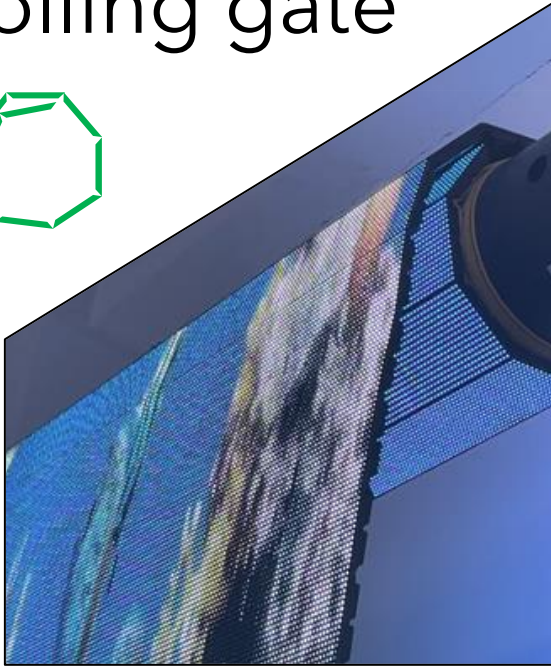
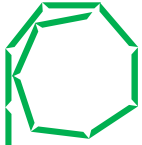
max brightness

600 nits

IP rating

IP65

rolling gate

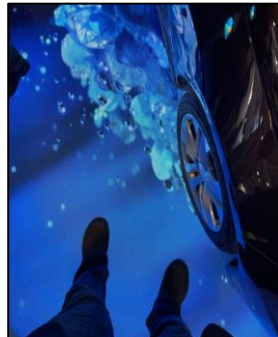


The **Sidewinder** rolling gate is the innovative solution for public displays that are not always in operation. The display can be electronically deployed, Producing a seamless and high-resolution image, then stored safely when inactive.

Featuring an impressive durability with a GOB epoxy protective coating, **Sidewinder** rolling gates can create a display at the entrance of a closed store or to replace the function which used to be filled with projectors and motorized screens.

Rich with all the value of direct-view LED, **Sidewinder** rolling gates can be used for several applications where you don't want to see the display when it is inactive.

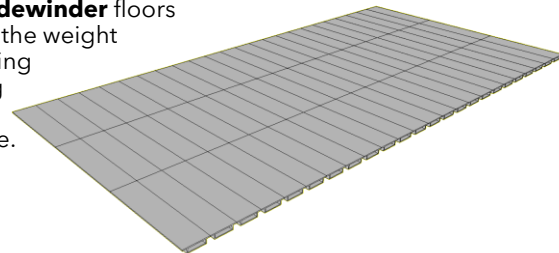
super-thin floor



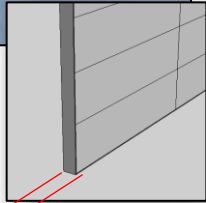
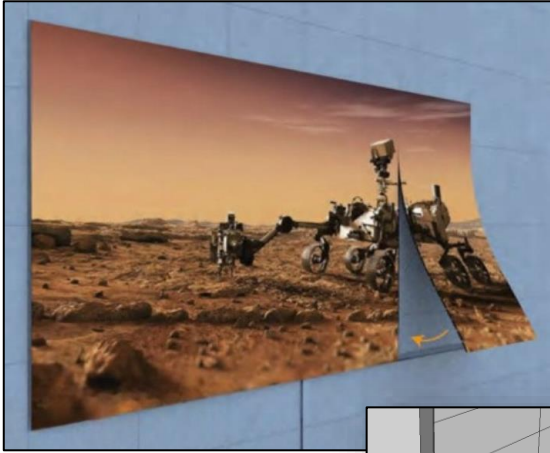
Create a stunning visual effect for audiences with an LED floor. With a total depth of only 13mm, the **Sidewinder** floor is the thinnest direct-view LED floor solution on the market. Display high-definition video using a product that lays on the floor like a rug. With a tightest pitch of 0.78mm, any viewing distance can be considered.

Sidewinder floors can be easily placed and moved, requiring very little effort for installation and causing almost no disruption to any active space.

With modules featuring a steel internal structure, **Sidewinder** floors can support the weight of a car making it an exciting prospect for any space.



flush on a wall

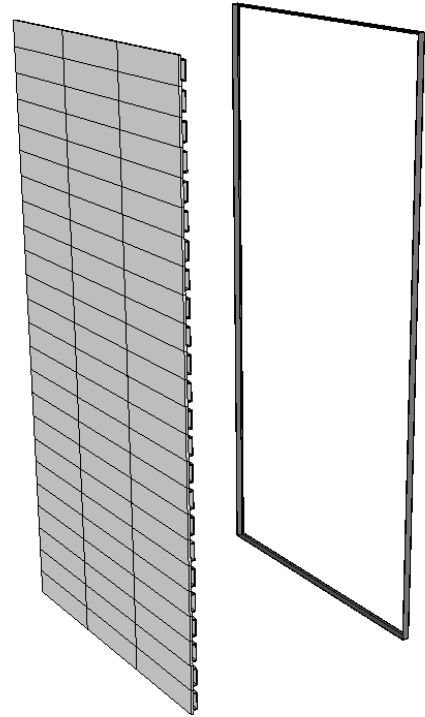


13mm

When you want to put a display on the wall with the slimmest profile, the **Sidewinder** flush mount solution is the way to go.

Held into a sleek and thin magnetic frame, **Sidewinder** rolls lay flat on a wall. With a total dept of 13mm, **Sidewinder** is entirely ADA compliant without needing to be recessed into the wall.

A highly-convenient and easy to install solution, **Sidewinder** can quickly transform any wall into a beautiful digital landscape.



collapsing 2K display



The **Sidewinder** portable display combines the storage and transportation convenience of Sidewinder rolls with the needs for portable displays. Unlike other mobile direct-view LED displays, Sidewinder quickly disassembles into rolls which are then easily packed into a special case.

The system includes hanging bars the hanging rail and can be paired with any standard speaker stands. Including a Novastar TU20, the system has an onscreen interface which is controller with an included remote control.

A 2K display you can put in your truck, the **Sidewinder** portable display is handled and transported as light-weight rolls. Setup and strike are quick and painless, making the Sidewinder Portable Display a solution you can easily take with you on the go!





panel configurations

	500x1500mm	750x1500mm
width	500mm (19.7in)	750mm (29.5in)
height	1500mm (59in)	1500mm (59in)
depth	10mm (0.4in)	10mm (0.4in)
weight	12kg (26.4lbs)	18kg (39.7lbs)

general specifications

brightness	600 Nits
LED half-life*	100,000 Hours
contrast	5,000:1 (8,000:1 for 1.9mm)
refresh rate	3,840 Hz
frame rate	50, 60 Hz
color temperature	8,500K default (2,000 - 10,000 K range)
processing depth	14-16 Bit
scan rate	1/32, 1/21, 1/16
temperatures	-20°C - +50°C operating
operating humidity	10% - 85% RH, non-condensing
operating voltage	100-240V AC, 50/60 Hz
ip rating	IP30
service access	Front or rear
warranty	3-year default (up to 5-year available)
certifications	ETL, FCC, LVC, EMC