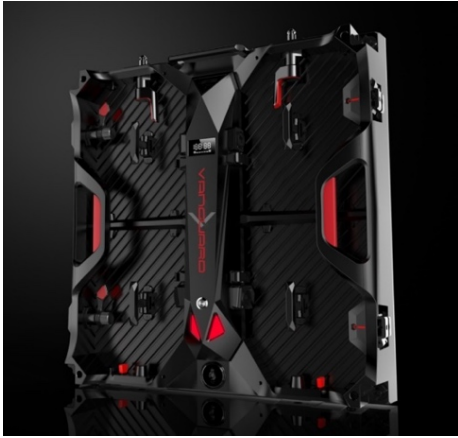


Product Specifications



TUNGSTEN SERIES

Indoor P1.9 • Durable & Rugged LED Cabinet



Overview Vanguard's Tungsten cabinet available in P1.9, features a virtually indestructible LED surface. Edge corner protectors and raised modules yield additional protection. Tungsten is the durable cabinet that the display industry has been waiting for as it can withstand the rigors of any environment. The cabinet is front **or** rear serviceable and has a die-cast aluminum frame. The power supply module can easily be swapped as a single unit by detaching 4 clips, pulling the PSU and replacing it with a new one. LED modules can be quickly removed using a glass suction cup tool and replaced with a new module. The Tungsten modules are covered with a substance that makes the modules impervious to impact. The 8 point integral locking system enables quick assembly as well as precise alignment. The internal side locks allow for curvature up to 5 degrees concave or convex. Aluminum module covers improve flatness uniformity which allows for the protective resin encasement to be as flat and uniform as possible. Aluminum module covers also improve heat dissipation over traditional modules. This product is suitable for simulation structures for military, maritime, and aviation applications.

Additional Features

- Resin encased LED modules mean SIGNIFICANTLY less chance of damage to LED modules.
- Fold-over edge protectors for keeping cabinet corners protected during set-up and tear down.
- Aluminum modules provide greater flatness uniformity for improved resin flatness and uniformity.
- Aluminum modules provide improved heat dissipation.
- Curvable 5 degrees concave or convex.
- Low Power Consumption.
- 14+-bit gray scale.
- Removable PSU and data housing.
- No internal ribbon cables.
- Superb color & brightness uniformity.
- Refresh rate minimum of 2880Hz
- Contrast Ratio: 3000:1

Specifications

Tungsten Indoor P1.9

LED

LED Type	SMD1R1G1B
LED Configuration	3 in one
Pixel Density	262,144/m ²
Module Size	9.84" x 9.84"
Module Resolution	128 x 128
Modules Per Cabinet	4
Lifetime to Half Brightness (L50)	100,000
Contrast Ratio	3,000:1
Brightness	800Nits
Viewing Angle	140°

CABINET

Cabinet Material	Die Cast Aluminum
Cabinet Size	19.8" x 19.8"
Cabinet Resolution	256 x 256
Min. Viewing Distance	6.3 ft.
Modules Per Cabinet	4
Cabinet Weight	19.1lbs.
Service Access	Front or Rear
IP Rating	IP30

INTERNAL OPERATION

Driving Method	1/15 th Scanning
Gray Scale	14bit
IC Driver	Chipone 2055
Refresh Rate	>2880Hz
Frame Frequency	60Hz

AC POWER

Source Voltage	100-240V, 50/60Hz
Max Power Consumption	200W
Avg. Power Consumption	100W

ENVIRONMENTAL

Operating Temperature	-10°C to +50°C
Storage Temperature	-20°C to +60°C
Operating Humidity	20% to 90% RH

Specifications

